

Dear Neighbour

Woodside Primary & Nursery School

project newsletter

June 2020

**MORGAN
SINDALL**

CONSTRUCTION

Safe

On time

Snag free

Delighted customer

Recommended

Stay Safe!

Welcome to Dear Neighbour, our newsletter that keeps you updated on the Hethersett Primary School project

Welcome back to our monthly newsletter! We hope you are keeping well and that you and families have been keeping safe during these challenging times.

Morgan Sindall takes pride in the way we operate and have since reviewed our safe systems of works taking into account and implementing polices and procedures in order to comply with the current CLC guidance on Covid-19. Rest assured we are doing our best to ensure that operatives and visitors to site are safe at all times.

The project is reaching the final stages with both internal and external finishing works being carried out.

Internally - 2nd fix carpentry and joinery is underway with doors, skirtings and ironmongery, kitchenettes are being installed and floor finishes are going down in readiness for sanitaryware. Painting is also being carried out in readiness for works such as mastic, blind installation and carpets.

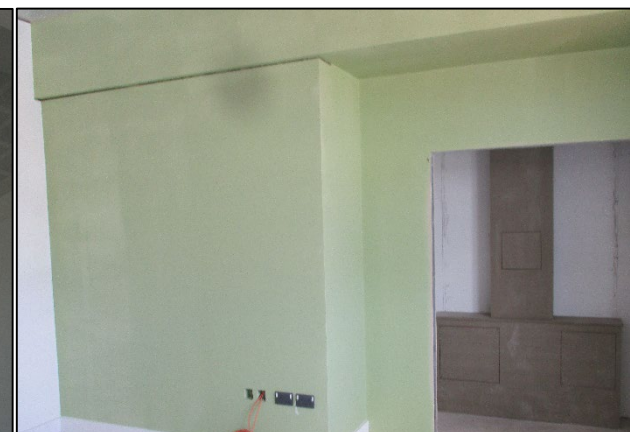
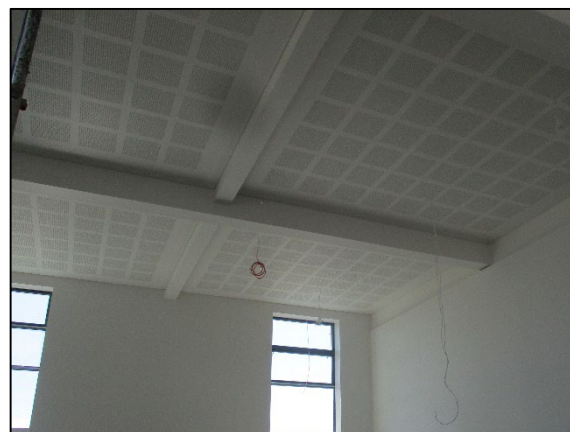
Externally – All drainage is now complete. The sports field is being prepared in readiness for seeding works and external levels are being brought up for fencing and asphaltting. The pathway which links the school to Baker drive is being continued by the consortium.

Over the coming weeks we will continue with the internal works such as installation of toilet cubicles, final decorations and cleaning. Externally we will be completing of surface course works and external furniture as we countdown to completion.

We hope you and your families continue to stay safe and enjoy what hopefully will be; some better British weather!

As always – if there are any problems then please get in contact with one of the below team members and we will be more than happy to assist.

Take care



www.hethersettprimaryproject.co.uk

This project is now registered under the Considerate Constructors Scheme! (118236)
Our first visit achieved 42/50!



www.ccscheme.org.uk

Keeping up to date with Morgan Sindall across the UK

Follow us on twitter [@morgansindallci](https://twitter.com/morgansindallci) for all the latest news

Find out more about us on <http://construction.morgansindall.com>

Keep up with us on LinkedIn at www.linkedin.com/company/morgansindall

Contact us

If you have any questions or concerns, please contact a member of our project team (pictured below) on the number provided. If you can't get hold of anyone you can also use the emails below or phone our Norwich office on 01603 666669.

john.stedman@morgansindall.com

danny.branson@morgansindall.com



John Stedman

Senior Contracts
Manager

07970 880921



Danny Branson

Site Manager

07779 447424



Tony Loftus

Managing QS

01603 666669



Drew Bickers

Health & Safety
Advisor

07966 375010

Delivering Hethersett Primary School

Delivered on behalf of Norfolk County Council the project involves the construction of a new primary school and nursery which will facilitate the move of Woodside Infant School. The build will create 420 student spaces and is due for completion Summer 2020

Everyone has the right to be

100% Safe

On Site Defibrillator

We have a defibrillator located on site - for use by the public in the event of an emergency.