

Hethersett Woodside Primary & Nursery School



Coachmaker Way, Hethersett, Norwich NR9 3GN

Tel: Norwich 01603 810674

Email: office@hethersettwoodside.norfolk.sch.uk Headteacher: Mrs Angela Jermy

Year Three: Lime

Dear Parents,

Welcome back to our final couple of months in Year 3. Thank you for working with us for a really successful half term, which has seen the children settle back into school life. You'll find below just some of the great learning that has taken place since Easter.

PE will be on Mondays and Tuesdays this half term. The children will need to continue to come to school in their sportswear on these days please.

Our topic for this half-term is 'Around the World in 80 Days'. This encompasses learning about countries across the world, discovering their key physical and human characteristics and finding them on maps and globes. In English, we will be studying the texts 'The Miraculous Journey of Edward Tulane' by Kate DiCamillo and 'Journey' by Aaron Becker which will inspire a variety of both fiction and non-fiction writing. In maths we will be continuing our work on length (including perimeter and area), exploring fractions and deepening our understanding of the properties of shapes and angles.

Please see below for a summary of all the learning taking place over the course of the half-term. As the warmer weather arrives, we advise children to bring a sun hat to school and apply suncream before arriving. (Please note suncream cannot be applied in school.)

If there is any further information or support you require, please do try and catch one of us at the school gate; contact us via email or contact the school office to arrange a conversation.

Kind Regards

Mrs de Bloeme and Mrs Easey



Hethersett Woodside Primary & Nursery School



Coachmaker Way, Hethersett, Norwich NR9 3GN

Tel: Norwich 01603 810674

Email: office@hethersettwoodside.norfolk.sch.uk Headteacher: Mrs Angela Jermy

Here is some of the learning that has taken place last half term:

Golden

Slowly, silently, now the sun
Walks the day in her golden shoons;
This way, and that, she peers, and see
Golden fruit upon golden trees;
One by one the casements catch
Her beams beneath the golden thatch;
Loudly, the golden rooster clucks in the golden sun.
Slowly, the sun shines on the golden lake.
Silently, the sun glints on the golden, glittering sand.
Slowly, the sun shines on the golden grass.
The golden magma spews from the volcano.

By Arlo

Golden

Slowly, silently, now the sun
Walks the day in her golden shoons;
This way, and that, she peers, and see
Golden fruit upon golden trees;
One by one the casements catch
Her beams beneath the golden thatch;
Golden grass moving in the flaps of the wind.
Cats lying in the sunny grass.
Golden leaves above the ponds.
Golden birds sing in the sun.
The fish flapping in the golden water.
The bunnies hopping in the sunny sand.

By Freya

Golden

Slowly, silently, now the sun
Walks the day in her golden shoons;
This way, and that, she peers, and see
Golden fruit upon golden trees;
One by one the casements catch
Her beams beneath the golden thatch;
A cat prowling beyond the golden grass.
A sheep munching on grass in the golden sun.
A cow mooing in the golden fields.
A dolphin swooshing through the golden sea.
A wolf hiding until night, for the golden sun is here in the glittering dawn.

Bu Brandon



Hethersett Woodside Primary & Nursery School

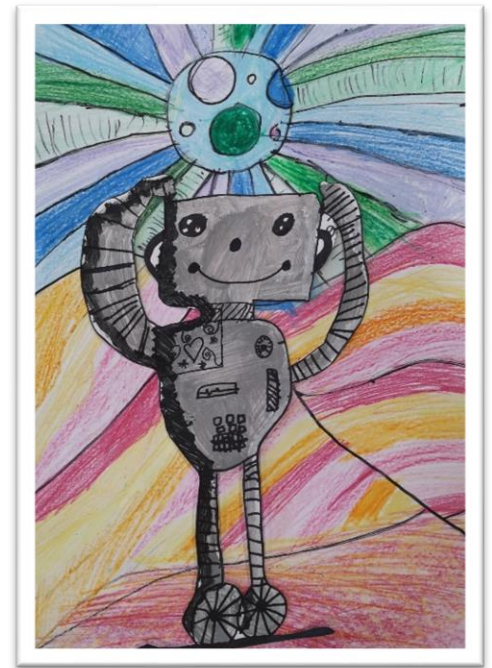
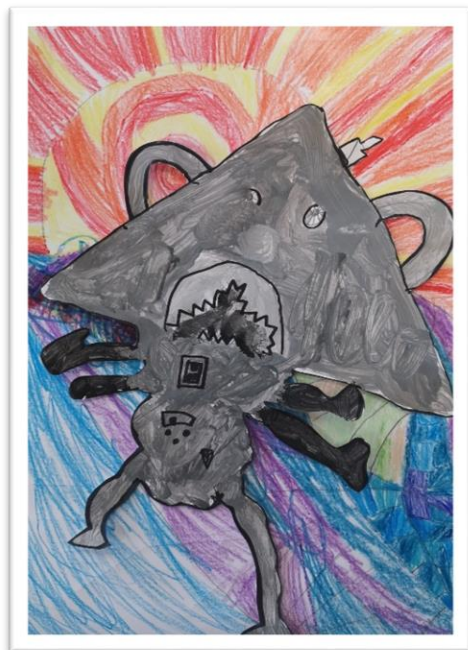


Coachmaker Way, Hethersett, Norwich NR9 3GN

Tel: Norwich 01603 810674

Email: office@hethersettwoodside.norfolk.sch.uk Headteacher: Mrs Angela Jermy

Artwork inspired by The Iron Man



Hethersett Woodside Primary & Nursery School



Coachmaker Way, Hethersett, Norwich NR9 3GN

Tel: Norwich 01603 810674

Email: office@hethersettwoodside.norfolk.sch.uk Headteacher: Mrs Angela Jermy



Hethersett Woodside Primary & Nursery School



Coachmaker Way, Hethersett, Norwich NR9 3GN

Tel: Norwich 01603 810674

Email: office@hethersettwoodside.norfolk.sch.uk Headteacher: Mrs Angela Jermy

Long Term Plan

Summer 3.2

| Subject | Coverage | | |
|--------------------------|--|---|---|
| Maths | Length (Area and Perimeter) | Fractions | Geometry (Angles and Properties of Shape) |
| English: Reading | The Miraculous Journey of Edward Tulane by Kate DiCamillo Journey by Aaron Becker | | |
| English: Writing | A range of writing opportunities will stem from our study of the text, including story and recount writing and non- chronological reports. | | |
| English: Spelling | Words ending in the suffix -al | Words ending with a /zhuh/ sound spelt with 'sure' and 'ture' | Silent letters |
| English: Grammar | Adjectives | Punctuation including speech punctuation | Conjunctions |
| | Fronted adverbials | Prepositions | Paragraphs |
| Geography | <u>Locational Knowledge</u> Locate the world's countries and learn about their environmental regions, key physical and human characteristics and major cities. | | <u>Geographical Skills</u> Use maps and globes to locate countries and describe features. Use the eight points of a compass, grid references, symbols and keys. |
| RE | Philosophy | | |
| PE | Multi sports and dance | | |
| PHSE | Why should we keep active and sleep well? Wellbeing Wednesday | | |
| RSE | See school website for details of the RSE curriculum | | |

Homework



Hethersett Woodside Primary & Nursery School



Coachmaker Way, Hethersett, Norwich NR9 3GN

Tel: Norwich 01603 810674

Email: office@hethersettwoodside.norfolk.sch.uk Headteacher: Mrs Angela Jermy

We will give children homework via our Google Classroom page.

Every Monday, we will send out the weekly Year 3 spellings for children to practise at home. We also ask that they practise their Times Tables. Everyone has a particular Times Table they are currently working on. It is also useful to occasionally revisit those that children are more secure on to keep their fluency.

Other homework based on our science topic, English, maths or foundation subjects will be added on a Friday.

