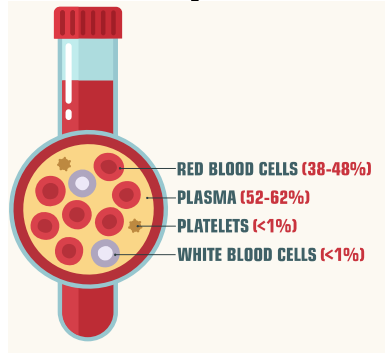


**Blood**



**plasma**

watery liquid that blood cells are suspended in and waste is carried

**red blood cells** carry oxygen

**white blood cells** defend us and attack threats

**platelets** clot blood when wounds occur

carries nutrients  
carries oxygen  
cleans waste  
protects

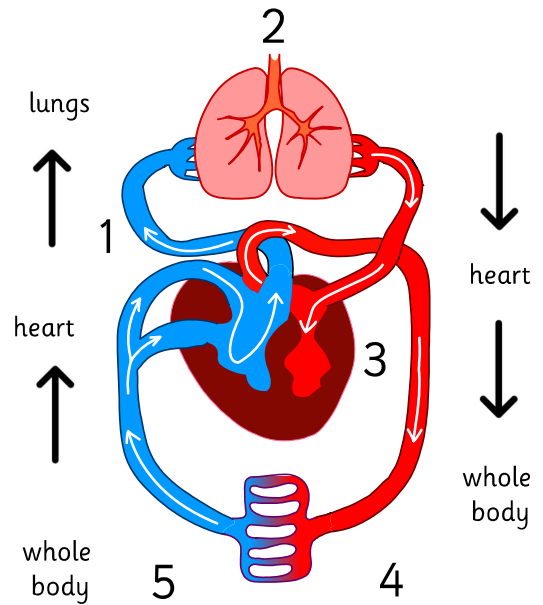
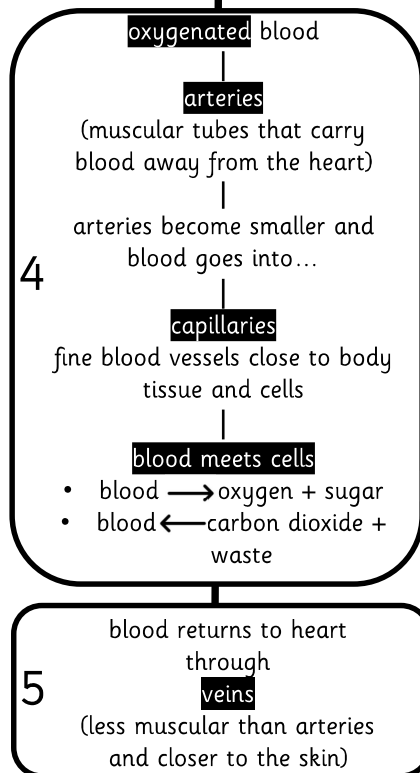
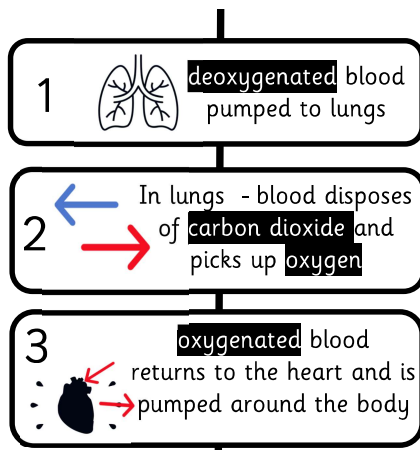


arteries only carry deoxygenated blood

blood is **NOT blue**  
Only blue to show difference in blood through diagrams

blood is **bright red** (oxygenated) or **dark red** (deoxygenated)

**Circulatory system**



**oxygen**

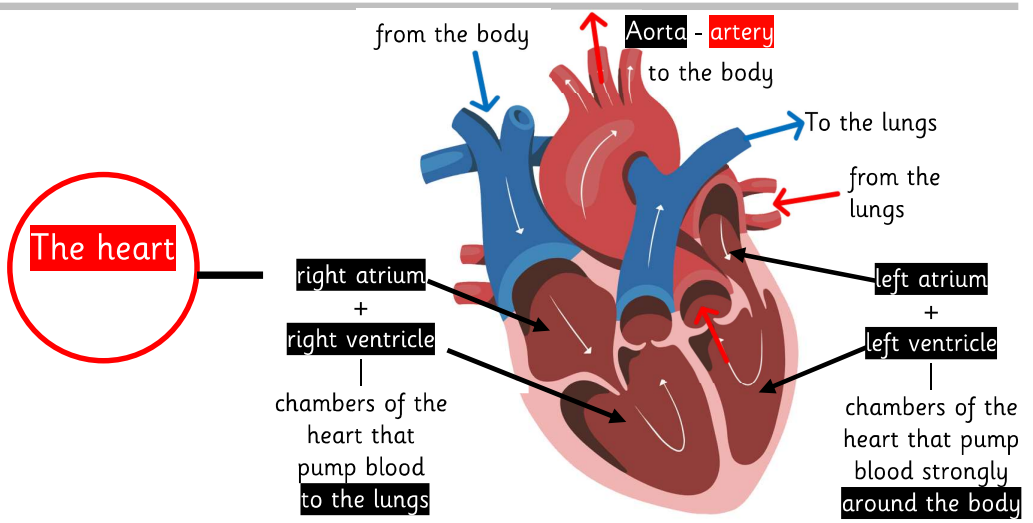
an element (gas) vital for life – red blood cells carry oxygen (oxygenated)

**deoxygenated**

blood that has given oxygen to cells and taken away carbon dioxide waste (scientific diagrams show this blood as blue, but we know it is dark red)

**carbon dioxide**

waste gas produced by cells and removed by plasma in the blood



right side receives blood from the body and sends it to the lungs

left side receives blood from the lungs and pumps it away from the heart